

## INSTALLATION INSTRUCTIONS

VOLT® OHM 2 Speaker Expansion Kit

**ITEM: [VAU-KIT-EXP1-SPK-PBZ](#)**

1-813-978-3700 • Mon-Fri 8am-8pm • Sat-Sun 10am - 6pm (ET)

**! WARNING**

The installation of this system requires digging or trenching. It is recommended to contact a local contractor to ensure there is no damage done to the power, gas or water lines. It could result in property damage, personal injury or death.

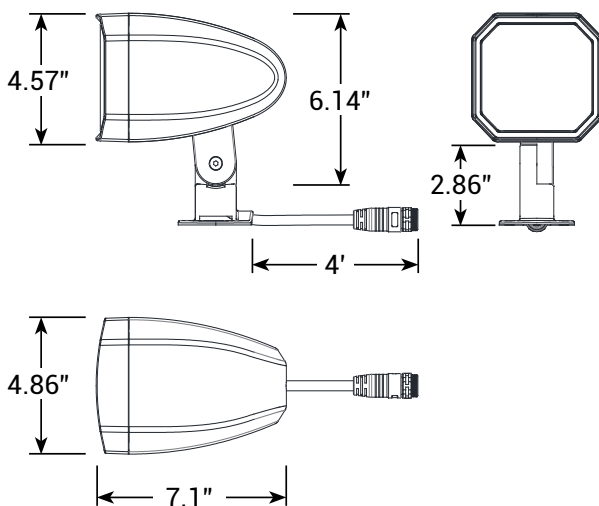
National phone number for the US is 811.

**PACKAGE CONTENTS**

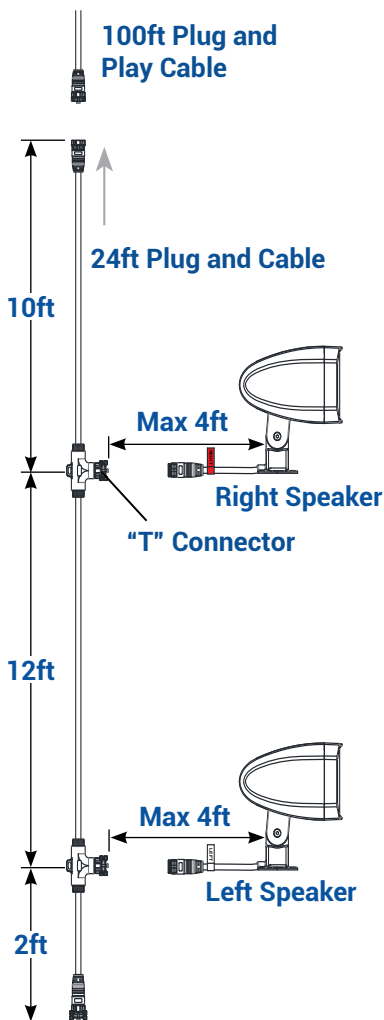
- |                                     |                                 |
|-------------------------------------|---------------------------------|
| A. (1) "Left" Satellite Speaker     | D. (1) 24ft Plug and Play Cable |
| B. (1) "Right" Satellite Speaker    | E. (1) Mallet Cap for Stake     |
| C. (2) Stakes for Satellite Speaker | F. (1) Allen Wrench             |

**PARTS REQUIRED (SOLD SEPARATELY)**

- A. Shovel or Trench Tool  
B. Smartphone or Tablet

**PRODUCT DIMENSIONS**

# 1 LAY THE ADDITIONAL 24FT PLUG AND PLAY CABLE



1. Attach the 10' or 2' end of the 24' plug and play cable to the 100' plug and play cable of the Outdoor Audio system.
2. Each satellite speaker is tagged as "Left" & "Right" and comes prewired with 4ft of cable. The speakers are specifically wired internally to the four wires inside the main cable as "Left" & "Right". The distance from the speaker to the "T" connector on the installation cable is maximum 4 ft.

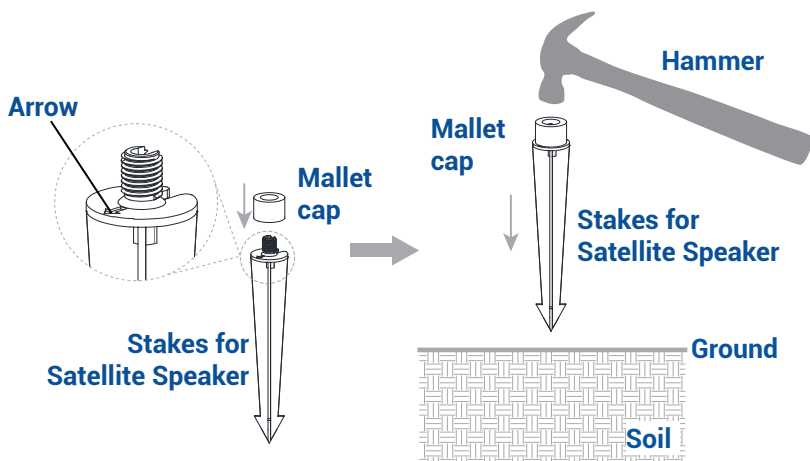
The satellite speakers can be connected anywhere in the run. Connect either the Right or Left speaker first and alternate them between each connection.

Three installation methods are available for satellite speakers. Refer to the following steps, choose one of the installation methods to complete the satellite speaker installation.

1. Stake: Install the satellite speaker into the ground.
2. Surface: Install the speaker into a hard surface.
3. Tree Mount: Attach the satellite speaker to a pole or tree.

## SPEAKER INSTALLATION METHOD 1: STAKE MOUNT

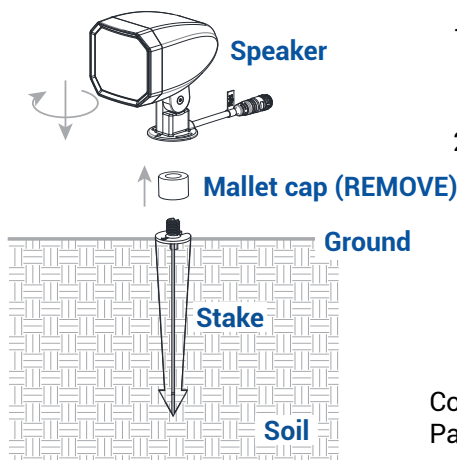
### 1 INSTALL STAKES FOR SATELLITE SPEAKERS



1. Place the mallet cap onto the stake for the satellite speaker.
2. Hammer the stake into the ground until flange of stake is flush to the ground.

**Note:** There is an arrow on the stake indicating the direction of the satellite speaker. Ensure that the arrow shows the desired direction of the satellite speaker when installed into the ground.

### 2 INSTALL SATELLITE SPEAKERS TO STAKES

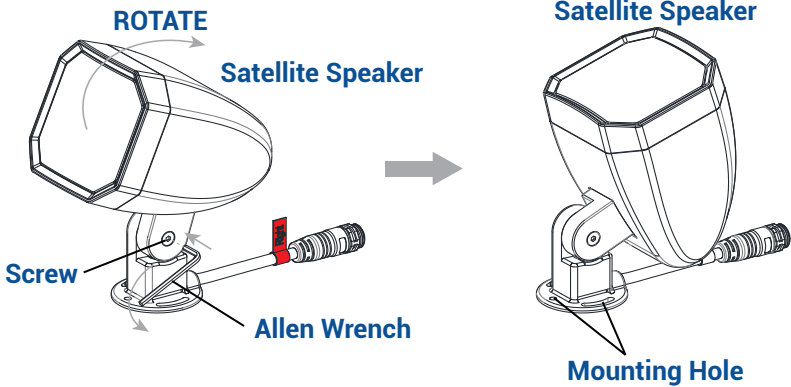


1. Remove the mallet cap from the stake that has been installed in the ground.
2. Thread the speakers onto the stake as planned (left speakers and right speakers are alternated). Be sure that the speaker is in the direction that indicated by the arrow on the stake after installation.

Continue to Connect the Speakers.  
Page 7.

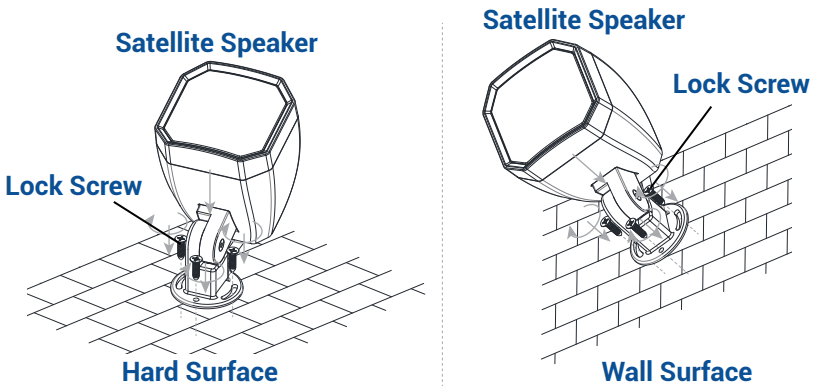
## INSTALLATION METHOD 2: SURFACE MOUNT

### 1 ADJUST SATELLITE SPEAKER ANGLE



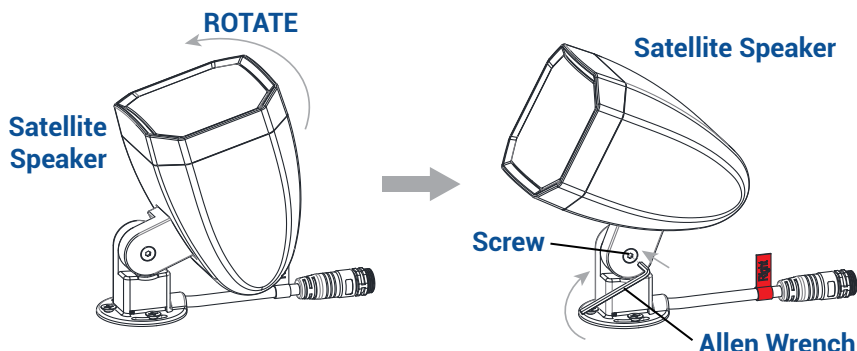
Use the Allen wrench, loosen the screw at the joint of the satellite speaker. Do NOT remove the screw. Rotate the satellite speaker to expose the mounting holes on the base.

### 2 INSTALL SATELLITE SPEAKER TO HARD SURFACE OR WALL SURFACE



Place the satellite speaker on a hard surface or wall surface. Drill the screws through mounting holes to secure the satellite speaker.

### 3 ADJUST SATELLITE SPEAKER ANGLE AGAIN

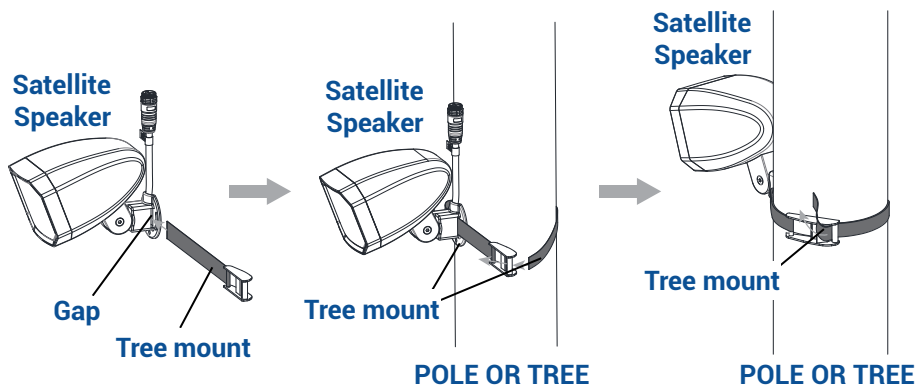


Adjust the satellite speaker to the desired direction. Using the Allen wrench, tighten the screw at the joint to secure the satellite speaker angle.

Continue to Connect the Speakers. Page 7.

## INSTALLATION METHOD 3: TREE MOUNT

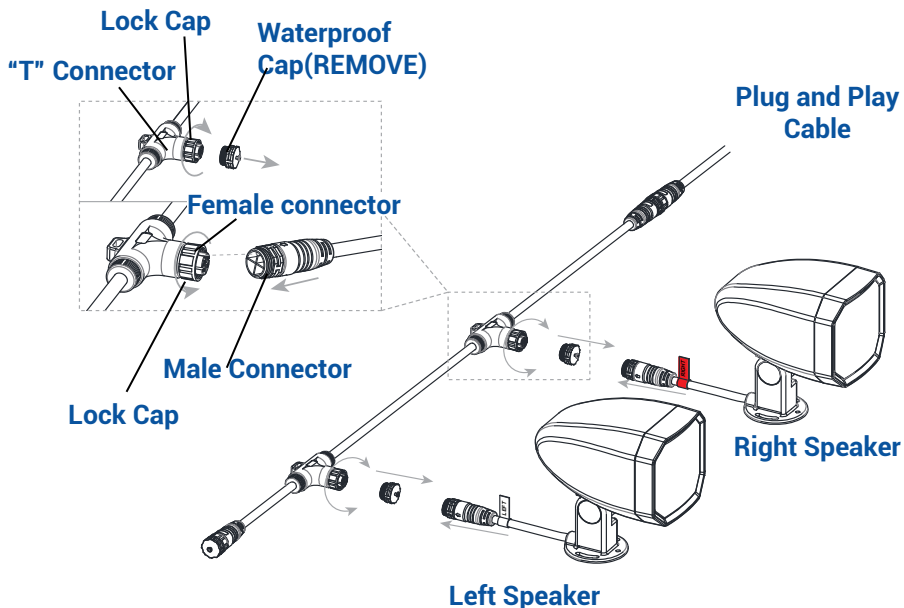
### 1 INSTALL SATELLITE BY TREE MOUNT



**NOTE:** The maximum width of the tree mount is 30mm (1.18"). Pass the tree mount (not included) through the gap on the base. Wrap the tree mount around the desired pole or tree and fasten to secure the satellite speaker.

Continue to Connect the Speakers. Page 7.

## CONNECT THE SPEAKERS



1. Loosen the lock cap on the "T" connector of the 100ft plug and play cable and remove the waterproof cap off of the "T" connector.
2. Connect the male connector at the end of the satellite speaker cable to the female connector on the "T" connector of the plug and play cable.

### NOTE:

- Do Not connect any other brand of speakers to this system.
- If a "T" connector is not being used, leave the waterproof cap on.



1-813-978-3700 • Mon-Fri 8am-8pm • Sat-Sun 10am - 6pm (ET)

Specifications and product details subject to change without notice.  
© Copyright 2025, VOLT® Lighting, Lutz FL USA 33549 • All rights reserved.  
[customersupport@voltlighting.com](mailto:customersupport@voltlighting.com) • [www.voltlighting.com](http://www.voltlighting.com)